

Rates

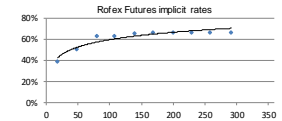
Table with 4 columns: Instrumento, TNA, and two dates (12/11/2021 and 11/11/2021). Rows include Caudión 7d, Caudión 30d, BADLAR Priv, TMO2 Priv, TFM-Leliq 7D, and Pasos Pasivos 7D.

BCRA A3500 USD \$100,227

Table with 3 columns: Days, %Change, and Annualized. Rows show data for 7d, 31d, 63d, 92d, 184d, and 365d.

Rofex - ARS/USD Futures

Table with 8 columns: Futures, Maturity, Days, USD, Rates, -d1, Ch, Op. L. Rows include SPOT, DLR112021, DLR122021, DLR012022, DLR022022, DLR032022, DLR042022, DLR052022, DLR062022, DLR072022, and DLR082022.



ARS - USD

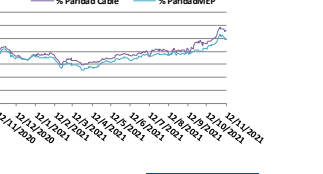
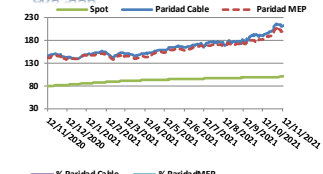


Table with 4 columns: \$, %, and two dates (100,227 and 112,30%). Rows include Spot, Paridad Cable, and Paridad MEP.

Bonds

Table with 8 columns: Bond, Code, Amt Out, Coupon, Price, YTM, MD, Maturity. Row: Sovereign Bond Inflation Indexed.

Table with 8 columns: Bond, Code, Amt Out, Coupon, Price, YTM, MD, Maturity. Rows include Bonor 24, Boncor 03-22, Boncor 09-22, Boncor 23, Boncor 03-23, Boncor 08-23, Boncor 03-24, Boncor 04-25, Boncor 11-26, Boncor 11-28, Disc-ARL 05, Par-ARL 05, C-Par ARL 05.

Table with 8 columns: Bond, Code, Amt Out, Coupon, Price, YTM, MD, Maturity. Rows include Sovereign ARS Floating Badlar, Bonar 22, Bonar Abr 22, Sub-Sovereign ARS Floating Badlar, CABA TD C20, CABA TD C24, CABA TD C28, PBA TD 2022, PBA TD 2025, Salta 2021, Santa Fe TD S1.

Table with 8 columns: Bond, Code, Amt Out, Coupon, Price, YTM, MD, Maturity. Rows include Sovereign ARS Fixed, Bonte \$ May 22, Bonte \$ Oct 23, Bonte \$ Oct 26, Ledes ARS, Lepasas ARS.

Table with 8 columns: Bond, Amt Out, Price, YTM, Days, Maturity. Rows include LeCer ARS Inflation Indexed, X31D1, X2F2, X31M2, X18A2, X2Y2, X30J2, X29L2.

Bonds

Table with 8 columns: Bond, Code, Amt Out, Coupon, Price (1), YTM, MD, Maturity. Rows include Sovereign ext. law USD, Bonos Int. 30 NYL, Bonos Int. 35 NYL, Bonos Int. 38 NYL, GD41 ext, Bonos Int. 46 NYL.

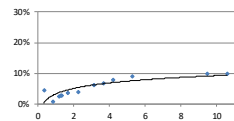


Table with 8 columns: Bond, Code, Amt Out, Coupon, Price (2), YTM, MD, Maturity. Rows include Bonar 1% 29, Bonar 30, Bonar 35, Bonar 38, Bonar 41.

Table with 8 columns: Bond, Code, Amt Out, Coupon, Price, YTM, MD, Maturity. Rows include Sovereign Arg. law USD Linked, Bonte 11-21 - USD Linked, Bonte 04-22 - USD Linked, Bonte 11-22 - USD Linked, Bonte 04-23 - USD Linked, Sub-Sovereign USD (3).

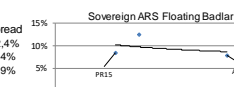


Table with 8 columns: Bond, Code, Amt Out, Coupon, Price, YTM, MD, Maturity. Rows include Bs. As. 37 NYL, Bs. As. 37 NYL, Bs. As. 37 NYL, CABA 27 NYL, Córdoba 21 NYL, Córdoba 24 NYL, Córdoba 27 NYL, Mun. Cord 27 NYL, Sta Fe 23 NYL, Sta Fe 27 NYL, Jujuy 27 NYL, Salta 27 NYL, Chaco 24 NYL, La Rioja 25 NYL, T.Fuego 27 NYL, Chubut 30 NYL, Entre Rios 28 NYL, Rio Negro 28 NYL, Neuquen 30 NYL.

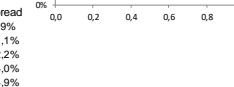


Table with 8 columns: Bond, Code, Amt Out, Coupon, Price, YTM, MD, Maturity. Rows include BS AS / Caba, CABA 27 NYL, Córdoba 21 NYL, Córdoba 24 NYL, Córdoba 27 NYL, Mun. Cord 27 NYL, Sta Fe 23 NYL, Sta Fe 27 NYL, Jujuy 27 NYL, Salta 27 NYL, Chaco 24 NYL, La Rioja 25 NYL, T.Fuego 27 NYL, Chubut 30 NYL, Entre Rios 28 NYL, Rio Negro 28 NYL, Neuquen 30 NYL.

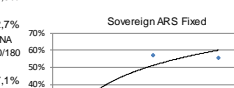


Table with 8 columns: Bond, Code, Amt Out, Coupon, Price, YTM, MD, Maturity. Rows include BA37D, BB37D, BC37D, CABA27, CO21D, CO24D, CO26, CO27D, MUNCOR27, SF23D, SF27D, JUS22, SA24D, CH24D, RIF25, TFU27, PUL26, ERF25, RN25, NQUEN30.

Corporate USD

Table with 8 columns: Bond, Code, Amt Out, Coupon, Price, YTM, MD, Maturity. Rows include Transener 2021, CGC 2021, Gensis 2022, Edenor 2022, AYSA 2023, Clisa 2023, Tecelpro 2022, YPF 2024, IRSA Prop. 2023, Cresud 2023, YPF 03-2025, Albanesi 2023, Pampa 2023, Arcor 2023, AerAero, CGC 2025, AES Arg. G. 2024, Raighsa 2024, Capex 2024, Telecom 2025, YPF 2025, TGS 2025, Telecom 2026, Galicia 2026, Macro 2026, YPF 2027, Pampa 2027, YPF 2028, YPF 2047.

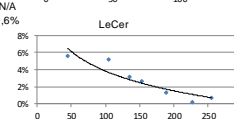
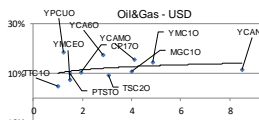
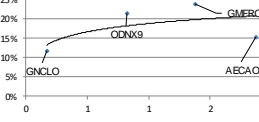
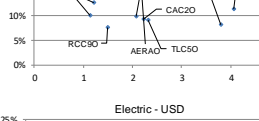
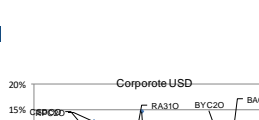
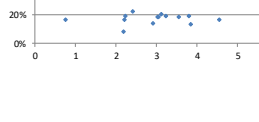
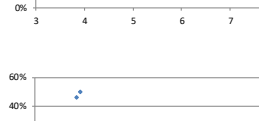
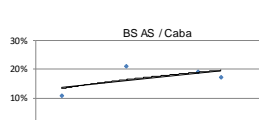
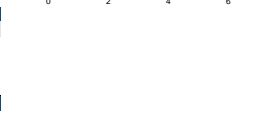
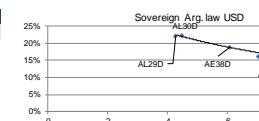
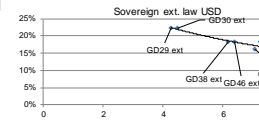


Table with 8 columns: Bond, Code, Amt Out, Coupon, Price, YTM, MD, Maturity. Rows include OTRX9, CPAC, GNCLCO, ODNX9, AYSA23, CLISO, TTC10, YPCUO, RPC20, CSDOO, YMCEO, GMFRO, PTSTO, RC90, AERAO, CP170, AEAQ, RA310, YPF 2027, YPF 2028, YPF 2047.

Table with 8 columns: Bond, Code, Amt Out, Coupon, Price, YTM, MD, Maturity. Rows include YPF 2047, YPF 2047, YPF 2047, YPF 2047, YPF 2047, YPF 2047, YPF 2047, YPF 2047.

Table with 8 columns: Bond, Code, Amt Out, Coupon, Price, YTM, MD, Maturity. Rows include YPF 2047, YPF 2047, YPF 2047, YPF 2047, YPF 2047, YPF 2047, YPF 2047, YPF 2047.

\*\* Dirty Price  
\*\* Callable Bond - Yield to Maturity



El presente documento ha sido realizado por Argenfunds S.A. con fines estrictamente informativos. No debe ser tomado como una invitación a suscribir cuotas parciales ni como una oferta de compra o venta de valores. El documento se ha realizado con fuentes de información consideradas confiables, pero la empresa no puede garantizar la exactitud de las mismas. Los fondos comunes de inversión están sometidos a variaciones en los precios de los activos que pueden afectar su rendimiento. Los rendimientos pasados de los fondos comunes de inversión no garantizan el desempeño futuro de los mismos. Las inversiones en cuotas parciales del Fondo no constituyen depósitos en Banco Macro S.A. a los fines de la Ley de Entidades Financieras ni cuentan con ninguna de las garantías que tales depósitos a la vista o a plazo pueden gozar de acuerdo con la legislación y reglamentación aplicables en materia de depósitos en entidades financieras. Asimismo, Banco Macro S.A. se encuentra impedida por normas del Banco Central de la República Argentina de asumir, tácita o expresamente, compromiso alguno en cuanto al mantenimiento, en cualquier momento, del valor del capital invertido, al rendimiento, al valor del rescate de la cuota partes o al otorgamiento de liquidez a tal fin. Gráficos de Elaboración propia. Fuentes Rofex CAFCI y Bolsar